

# SAFETY LEADER CTA | OCTOBER 2025

LET'S GET YOU TAKEN CARE OF®

## OCTOBER ACTION ITEMS DUE OCT 31ST

### 1 CTA ACKNOWLEDGEMENT SURVEY

[TAKE SURVEY NOW](#)

### 2 SAFETY FOCUS

Do only the Safety Focus listed below  
that pertains to your location:

- A) Store
- B) Facilities
- C) DC



## INJURY TRENDS

## OUR PEOPLE

### HEADS UP!

68 head injuries in August.

#### Common Culprits:

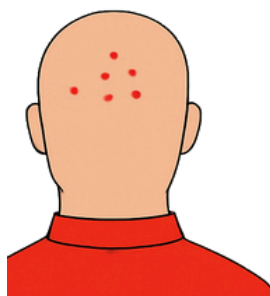
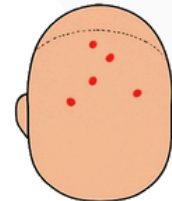
1. Tire Bar
2. Robo Arm
3. Tire Racking
4. Vehicle Doors
5. Inflation Cage

Practice **SPATIAL AWARENESS** to  
prevent head injuries



#### Head Injury Heat Map

Each red Dot  
represents a  
head injury





# VEHICLE DAMAGE TRENDS

OUR CUSTOMERS

## REMOVE YOUR KYNB FROM THE AIR CHECK

Please remove the **Know Your Numbers Board** from the air check lane!



**ASAP**

**Weather** is causing them to fall or blow into vehicles leading to some very expensive claims.

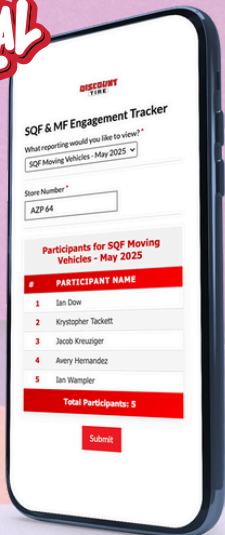


Review the updated **Air Check BP**:  
Do not place showroom displays (e.g., the KYNB) in the air check lane.



## ENGAGEMENT WEB APP & LEADERBOARD

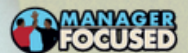
**NEW ARRIVAL**



**SCAN NOW**



### LEADERBOARD



NEW RANK	REGION	ACTION	OLD RANK	NEW RANK	REGION	ACTION	OLD RANK
1	Arizona	↑	4	14	Texas Houston	↑	15
2	California Central	↑	3	15	Texas Dallas	↑	17
3	Gulf Coast	↑	7	16	Illinois	↑	21
4	St. Louis	↑	5	17	Texas San Antonio	↓	1
5	California Northern	↓	2	18	Colorado	↑	14
6	Carolinas	↑	13	19	Utah	↑	20
7	Florida	↑	12	20	New Mexico/W. Texas	↑	19
8	Indiana/Ohio	↑	16	21	Nevada	↓	9
9	California Southern	↓	8	22	Michigan	=	22
10	Tennessee	↑	11	23	Kansas	↑	25
11	Minnesota	↓	6	24	Oklahoma	=	24
12	Washington	↑	18	25	Virginia	↓	23
13	Georgia	↓	10				

LEADERBOARD DATA IS FROM THE MONTH OF AUGUST



# CONTEST WINNERS – SEPTEMBER

WINNER



\$500

SAFETY & QUALITY FOCUSED  
VIDEO CONTEST

EMPLOYEE OF THE  
MONTH

Domingo Gomez  
TXH 90

ARE YOU GOING TO  
WIN NEXT?!  
REMEMBER TO SCAN,  
WATCH & WIN!

WHO IS GOING TO BE OUR NEXT  
EMPLOYEE OF THE MONTH?!

CLOSE CALL WINNERS



Jake Steffen  
CAN Region – CAN 41 (09/01/25)

Jorge Silva  
CAN Region – CAN 03 (09/08/25)

Jeremiah Diangson  
CAN Region – CAN 02 (09/15/25)

Andrew Mundell  
NVL Region – NVR 04 (09/22/25)

Michael Gomez-Figueira  
CAN Region – CAN 31 (09/29/25)

DON'T FORGET: WHEN YOU REPORT A CLOSE CALL, YOU  
ARE AUTOMATICALLY ENTERED TO WIN A \$50 GIFT CARD!

## OBSERVE & COACH RESULTS

➤ Continue coaching your people to make sure that BPs are being followed and recognize when coaching is needed.

### INSTALLING THE ASSEMBLY



91.3%

91.3% COMPLETED THE  
OBSERVATION SAFELY

### REMOVING LUG NUTS



86.6%

86.6% COMPLETED THE  
OBSERVATION SAFELY

## SAFETY ENGAGEMENT

THROUGH OCT 3RD, 2025  
(LAST 6 MONTHS)



Region	Engagement (%)
UTS	100%
COD	100%
TNN	100%
NVL	100%
NCC	100%
TXD	100%
TXH	100%
NMA	100%
TXS	100%
CAL	99%
CAN	99%
ALM	99%
FLO	99%
VAR	99%
AZP	99%
ILC	98%
GAA	98%
CAS	98%
MOS	97%
INI	97%
WAS	96%
MNM	96%
MIA	96%
KSK	96%
OKT	93%

PROVIDED BY: SAFETY  
DESIGNED BY: SAFETY, CREATIVE & MARKETING

PAGE 3 OF 3  
©2025 THE REINALT-THOMAS CORPORATION

PUBLISHED ON: 10/06/25  
VER 1.0